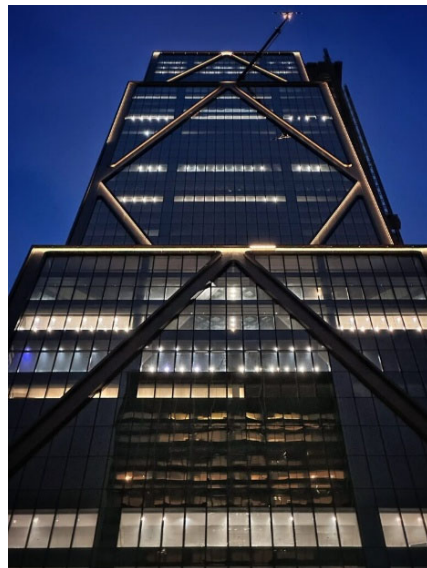
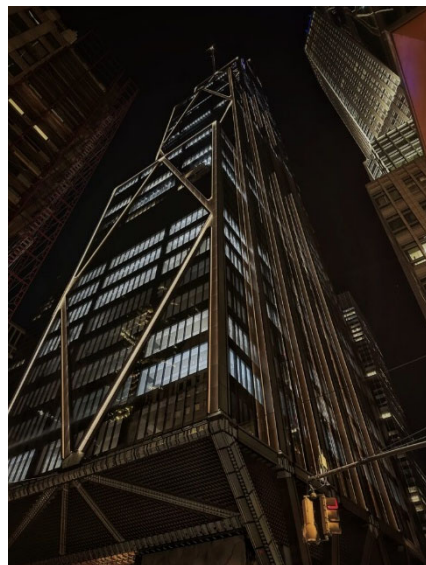
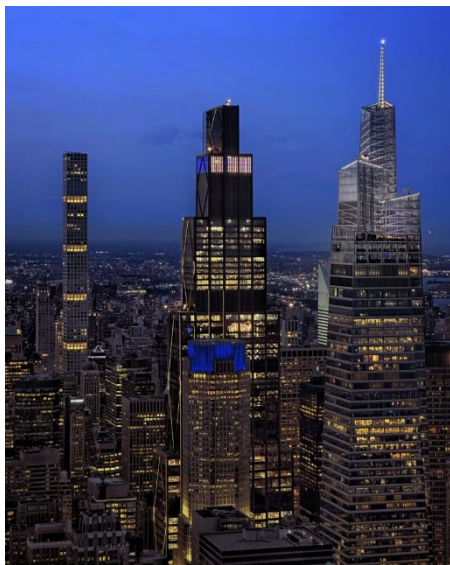


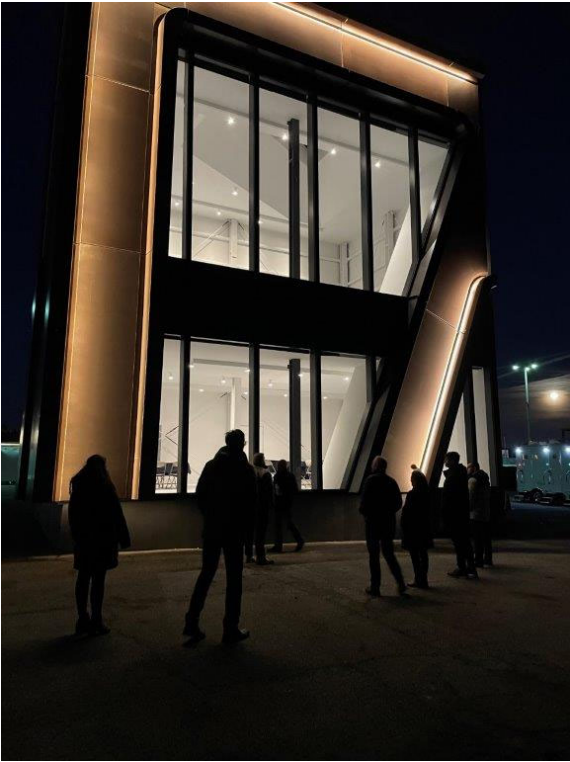
# JPMorgan Chase Headquarters – 270 Park Avenue

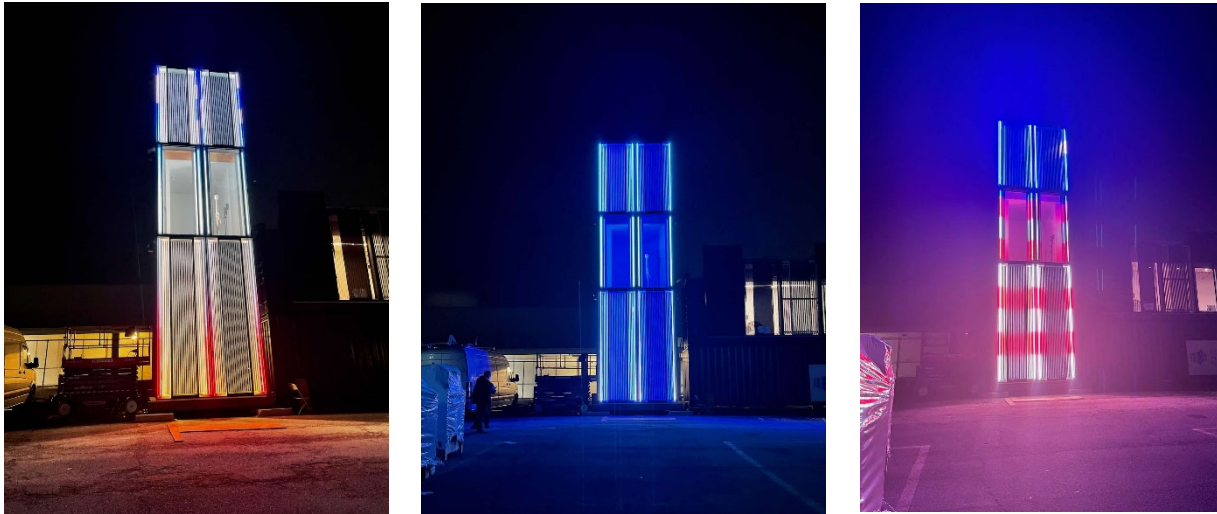
New York, NY, United States

---



Photos by  
Michael Young





---

Rising prominently in the heart of Manhattan, the new JPMorgan Chase headquarters at 270 Park Avenue redefines the modern commercial skyscraper through its scale, sustainability, and integrated architectural lighting design. Designed by Norman Foster of Foster + Partners and developed by Tishman Speyer, the 60-story supertall tower delivers approximately 2.5 million square feet of premium office space, accommodating up to 15,000 employees. Notably, it stands as the tallest building in New York City fully powered by hydroelectric energy, underscoring its commitment to sustainability and forward-thinking design.

A defining feature of the project is its extensive integration of DMX-controlled architectural lighting. Spanning several thousand linear feet, the dynamic lighting system enhances the building's vertical expression while allowing for precise control, color tuning, and visual storytelling across the façade. Crowned by a striking 300-foot-tall dynamic light art installation, the tower contributes a bold and ever-evolving presence to the New York City skyline.

As with any project of this scale and complexity, a comprehensive lighting mockup played a critical role in the design and validation process. Independence Lighting assisted with the installation and programming of the mockup fixtures. The mockup environment itself was substantial - comprised of multiple sea containers and a purpose-built three-story structure designed specifically to simulate real-world conditions. This allowed the project team to rigorously test fixture performance, control sequences, and visual effects prior to final implementation.

Through close collaboration and hands-on field support, Independence Lighting helped ensure that the final lighting design achieved both the architectural vision and technical performance required for a landmark project of this magnitude. The result is a sophisticated, high-performance lighting installation that reinforces the building's identity as a next-generation workplace and a new icon in the Manhattan skyline.