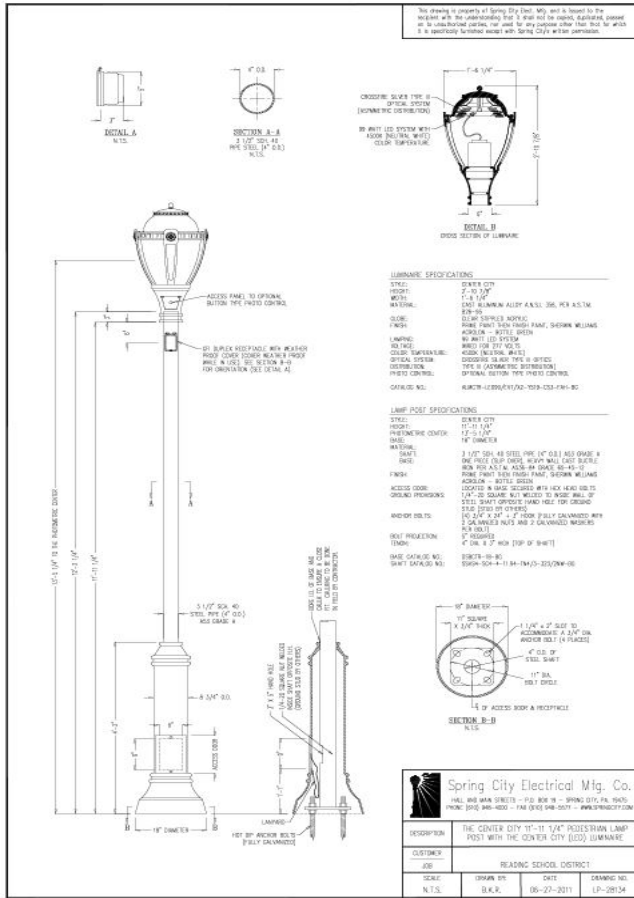


Independence Lighting Established 2005

Amanda E. Stout Elementary School





Amanda E. Stout Elementary School/Reading, PA/United States | Spring City Electrical/TMS Lighting/GVA Lighting/Image Arch Lighting/LA Lighting/EELP

The 1934 Amanda E. Stout Elementary School occupies half of a city block in the heart of a densely populated urban neighborhood in Reading. This project, which involved the addition of two new buildings as well as renovation of the historic school, relieved overcrowding by accommodating 500 additional students and doing so in a neighborhood and environmentally-friendly manner. Renovations to the existing building included restoration of masonry, terrazzo, plaster moldings, light fixtures, wood doors and a distinctive tile fountain, as well as replacement of some doors, and returning classroom windows to their original proportions to allow plentiful ventilation and natural daylight. The innovative design utilized in this project allowed the rehabilitation and continued use of a historic urban neighborhood school. By sustaining the local school and improving the walkability of the community, this project has been transformational to the neighborhood. The project achieved verified energy reduction, incorporated sustainable strategies eligible for LEED Gold certification, and was recognized for its environmental sustainability by USGBC Central PA Chapter.

